



MONTHLY MEMBERSHIP PROGRESS REPORT

District 321A3

Results as of: 5/31/2014

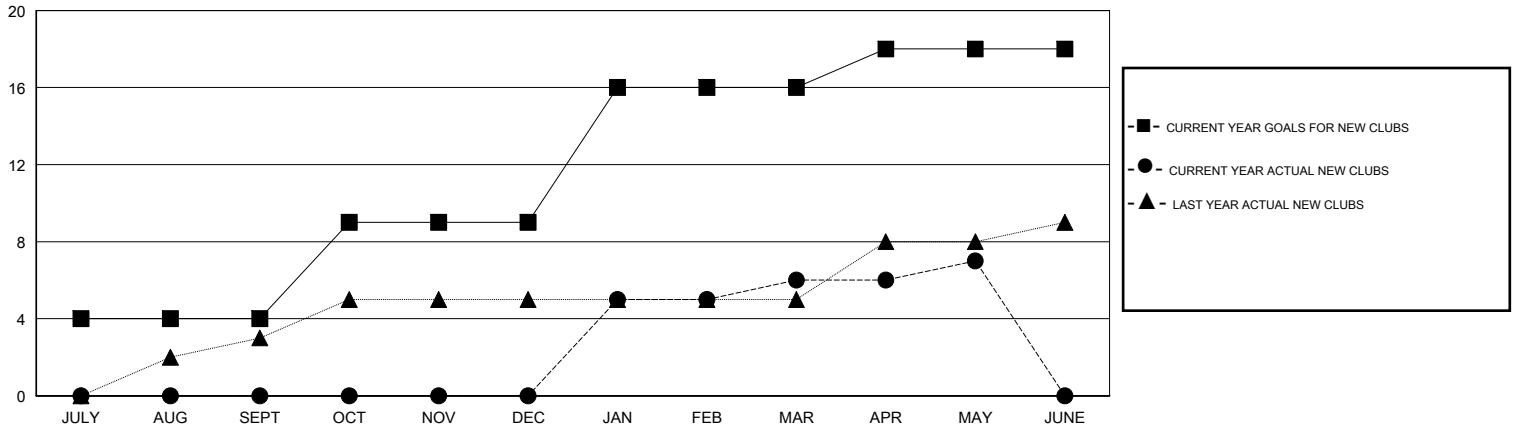
GMT: VINOD KHANNA

LOCATION INDIA

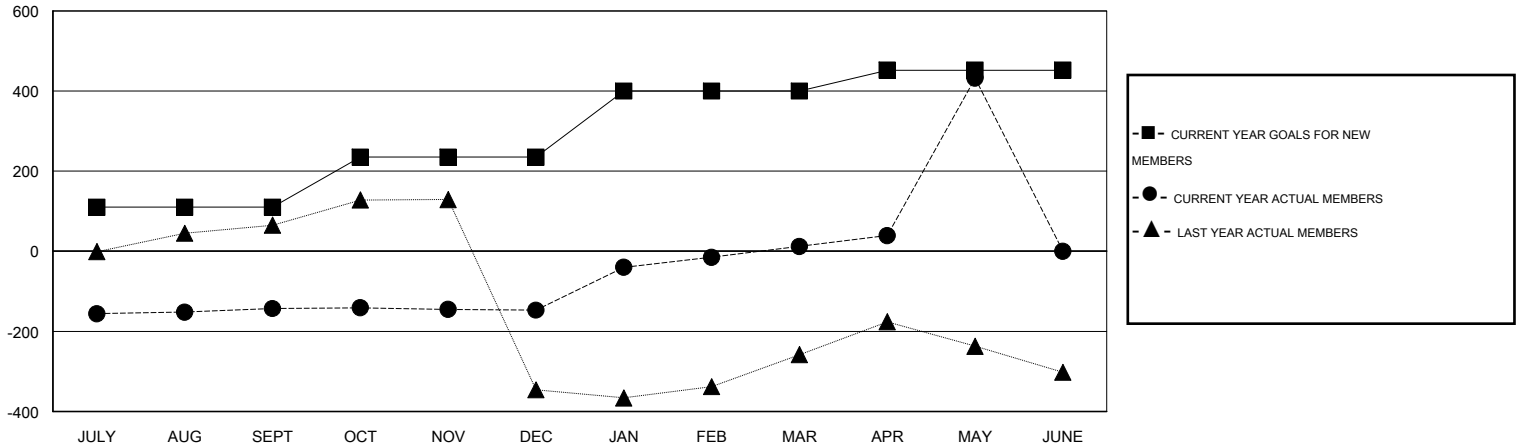
GMT CA 6

| Clubs | | | | | Members | | | | |
|-----------------------|---------------|------------------|----------------------|----------------------|-----------------------|-----------------|----------------------------|------------------------|----------------------|
| RESULTS FOR 2013-2014 | | | | | RESULTS FOR 2013-2014 | | | | |
| QUARTER | NEW CLUB GOAL | ACTUAL NEW CLUBS | ACTUAL DROPPED CLUBS | ACTUAL NET GAIN/LOSS | QUARTER | NEW MEMBER GOAL | ACTUAL TOTAL MEMBERS ADDED | ACTUAL DROPPED MEMBERS | ACTUAL NET GAIN/LOSS |
| JULY/AUG/SEPT | 4 | 0 | 0 | 0 | JULY/AUG/SEPT | 110 | 50 | 193 | -143 |
| OCT/NOV/DEC | 5 | 0 | 1 | -1 | OCT/NOV/DEC | 125 | 63 | 67 | -4 |
| JAN/FEB/MAR | 7 | 6 | 0 | 6 | JAN/FEB/MAR | 165 | 310 | 151 | 159 |
| APR/MAY/JUNE | 2 | 1 | 0 | 1 | APR/MAY/JUNE | 52 | 443 | 23 | 420 |

GOALS AND ACTUAL NEW CLUBS CUMULATIVE



GOALS AND ACTUAL MEMBERS CUMULATIVE



| | | | |
|------------------------|---|----------------------------|----------------|
| DROPPED CLUBS: 1 | 77 CLUBS OF 145 ADDED 1 OR MORE NEW MEMBERS | <u>GENDER DISTRIBUTION</u> | |
| <u>DROPPED MEMBERS</u> | | MALE | 2,673 (71.22%) |
| DECEASED | CLICK HERE FOR HEALTH ASSESSMENT DATA | FEMALE | 1,080 (28.78%) |
| CLUB CANCELLED | | FAMILY UNIT MEMBERS | 1,954 |
| OTHER | | HEAD OF HOUSEHOLD | 763 |
| TOTAL | | NON-HEAD OF HOUSEHOLD | 1,191 |